
GATES PROJECT GUIDE



KNOTWOOD™

It's Not Wood, It's Aluminum

Aluminum Gates

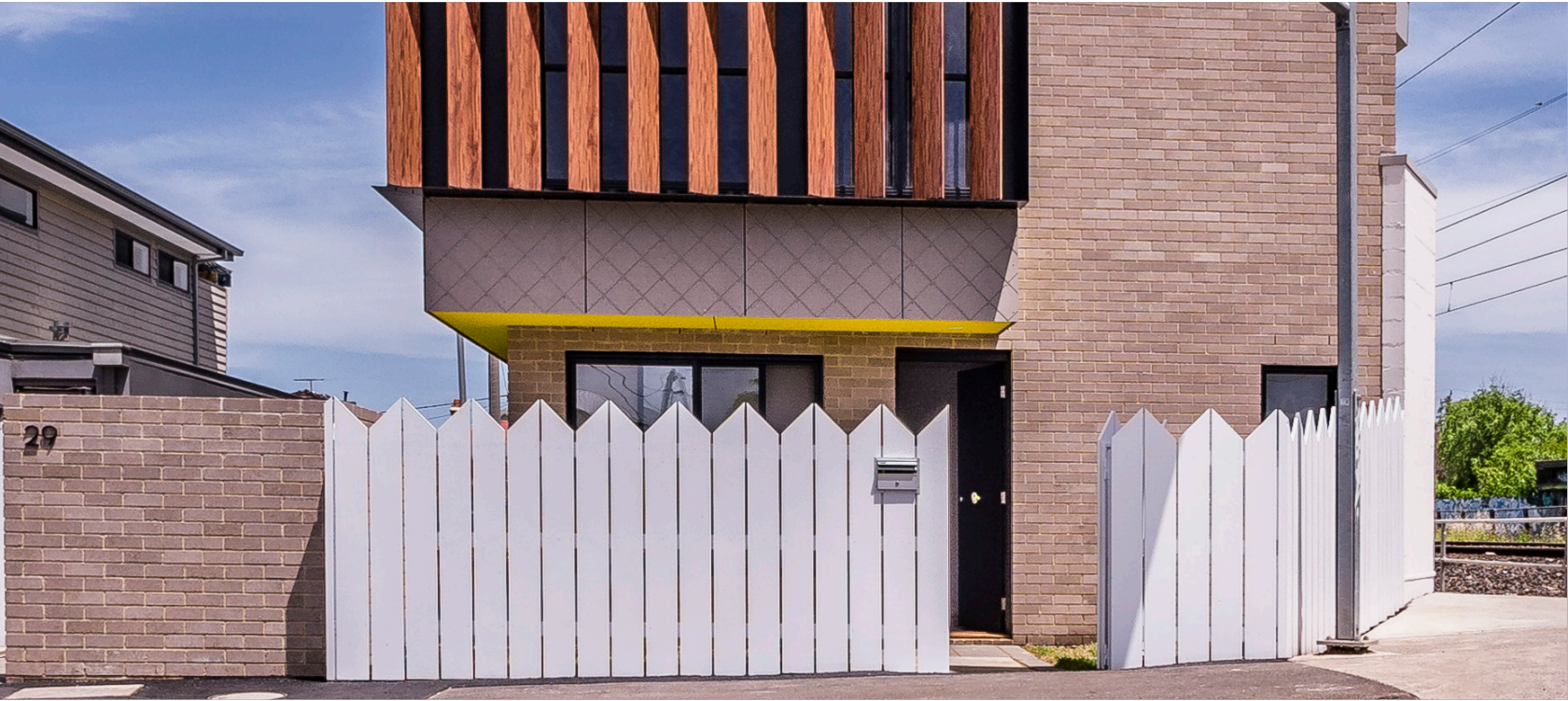
With the winning combination of strength, low maintenance and versatile range of styles, it's no wonder people the world over are using Knotwood's Gate system to elevate their homes to the next level. Made from highly durable aluminum and made to look just like natural wood, you can have the beauty of timber without the associated problems.

Front entry gates, pedestrian gates, driveway gates or even a barn door! Sliding or hinged, it's totally up to you. You can design your gate from scratch or select from our range of styles.

You won't be sacrificing quality. The Knotwood gate frame uses a unique corner stake combined with a cold-weld epoxy to create corners that have over 2600lbs/sqj of holding power, stronger than traditional welded gates.

Not only are Knotwood gates stronger than your average gate, they take less to maintain and look great while doing it. Knotwood's award winning woodgrain and powder-coat finishes are extremely low maintenance. Just a quick wash with mild, PH neutral detergent water is all it needs to stay looking brand new from the day they go in.





Knotwood Colors

All Knotwood colors have been tested to withstand the most extreme environments and uphold the highest finishing standards in the world including the Australian, American and European standards. Backed by a limited lifetime warranty, it's no wonder Knotwood's award winning finish is coveted the world over. With a full range of color matched accessories available you can ensure a clean, uniform finish that will leave you breathless.

Please note: These colors are a guide only contact our office for samples. Please be aware that Knotwood contains natural color variation consistent with that of real timber.

Stock Colors

Colors with a grey background are the Knotwood stock colors.

WHITE SHADES



ASPEN



DRIFTWOOD



ASH



BEACH WOOD



ZEBRANO

BLACK SHADES



BLACK ASH

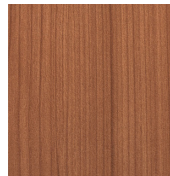
YELLOW SHADES



IROKO



TASSIE OAK



LIGHT OAK



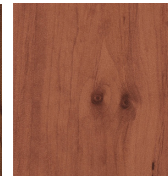
KNOTTY PINE



SPOTTED GUM



HICKORY



MAPLE



BLACKBUTT

YELLOW SHADES



ATLANTIC
CEDAR

ORANGE SHADES



AUSTRALIAN
CEDAR



RED GUM



KOA



TIGER WOOD



MERBAU



IRON BARK

LIGHT BROWN SHADES



EASTERN
MAHOGANY



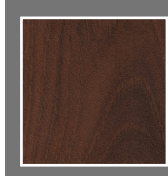
WESTERN RED
CEDAR



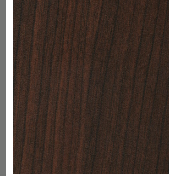
BUSH CHERRY



ELM



KWILA

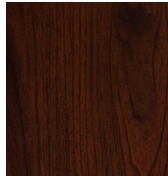


TEAK BROWN

DARK BROWN SHADES



OLIVE TREE



BLACK WALNUT



WENGE

RED SHADES



JARRAH



SYDNEY BLUE



ROSE
MAHOGANY

Powdercoat Colors

If you want the reliability and consistency of a solid color, you can't go past our huge range of powder-coat colors. With the full range of colors on hand and a library of hundreds of custom colors only a phone call away, you can have exactly the look you want. All of our solid colors carry the same limited lifetime warranty as our premier woodgrain finish and are all applied in-house by our experienced and accredited applicators to ensure you get the gold-standard of quality you deserve.



Frequently Asked Questions

Q. Can I build it myself, or do I need an installer?

A. While we strongly recommend getting one of our licensed installers involved in your project to ensure everything is up to spec, we also have all our installation guides and manuals freely accessible on our website if you feel like you're up to the task.

Q. How big can my gate be?

A. Sliding gates can be built as big as required. For hinged gates we recommend not being longer than 1.5ft. wide and 1.8ft. high. But they can be as big as you like so long as the slats do not span more than 2ft. without a post or support. Your Installer will recommend the best course of action in the case you need a gate wider than 2ft.

Q. Do I need any special tools or equipment to build a Knotwood gate? How does it come?

A. To build a Knotwood gate all that is required is a saw suitable for cutting aluminum (miter saw) and a drill with a Philips head driver bit. All Knotwood products are delivered in lengths of extruded material (18' 6".) and are not pre-cut to size unless requested through your installer. The cold weld epoxy and corner stakes come pre-packaged in suitable quantities.

Q. How much does it cost?

A. Prices vary depending on the style and size of your gate, freight costs and labor time. Your installer will be able to provide a quote based on the individual project. Our sales team can also provide quotes for supply of materials only (not labor).

Q. How long will it take to get my new gate made?

A. On average it takes about one to two weeks to produce material for a specific project. Freight times vary based on your area. Your installer will be able to provide a lead time for you based on your individual project.

Our
RANGE



KNOTWOOD STYLES

Pick from our range of styles or create your own. With Vertical, horizontal, diagonal and louver styles, you can be sure there is something to match your need. For a full list of styles visit our website.

www.knotwood.com/gates/

FRAME SIZES

For sliding gates and large swing gates our Large gate frame is ideal, with a chunky 4x2" profile it is ideal for applications where strength is a priority.

For most gates our small Gate frame provides a clean and neat finish with a lighter 2.5x1.5" profile.

Gate posts are also available in several sizes, ranging from 2x2" to 4x4" widths.

SLAT SIZES

All slats will fit any of our frames, mix and match or stick with one size for a clean, consistent look. Slats are all 63" thick and are available in the following widths.

- 1-1/2" wide
- 2-1/2" wide
- 4" wide
- 6" wide

UNIQUE ACCESSORIES

A full range of color matched accessories are available including end-caps. Hinges, locks and roller kits can all be supplied with your order.



Easy Installation

We strive to make Knotwood as easy, simple and efficient as possible. All of our Installation guides and technical manuals are readily available.

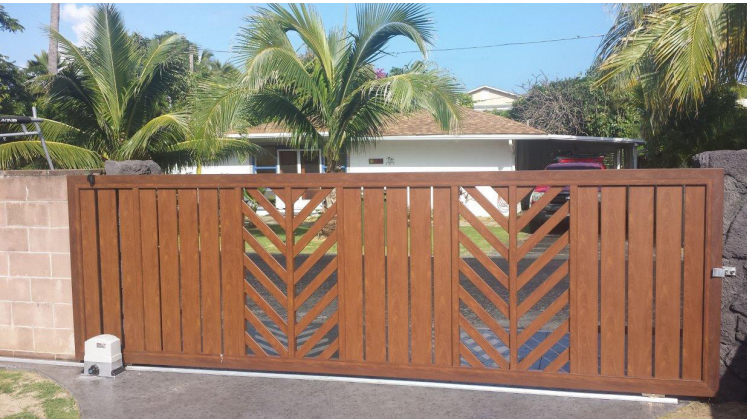
Each manual contains step-by-step instructions and product codes. You can train yourself in minutes and our sales team are always on hand to answer any questions you might have.

You can find the full list of guides by going to our website www.knotwood.com

Our
PRODUCT







01 Tree of Life - Kailua, Hawaii

The forerunner for the Tree of life style, this stunning project showcases the versatility of the Knotwood system. Created by cutting 65" slats on an angle and alternating them with vertical 100" slat panels. The look it creates speaks for itself. Automation was the final step to creating a true masterpiece.



02 Vertical slat fence panel Coffs Harbour, AUS

The brief for this project was full privacy. Vertical 65mm slats with no gaps creates a wall of textured finish that effortlessly slides away, providing security, privacy and style for this home. Mixing white woodgrain slats with a grey powder coated frame draws attention to the woodgrain finish.

03 Glass entry gate – Gold Coast, AUS

Created by fixing a Knotwood wood-look flat panel to a sheet of glass fixed into Knotwood's small gate frame this one-of-a-kind project boasts a style few can match. Elegance and simplicity is finished through the high-grade brushed aluminum handles on both sides.



04 Horizontal double swing - Hawaii, USA

A classic double swing gate is a statement, and this project in Hawaii makes that statement with pride. Wonderfully crafted, this simple project shows off the clean lines and stunning Western red cedar color. The hinged gates boldly stand at the forefront of this home, finishing the street view of the home in sheer style.



KNOTWOOD™

It's Not Wood, It's Aluminum

30 Tech Parkway South, Suite 400
Peachtree Corners, GA 30092

Phone: **1.855.566.8966**

Web: **www.knotwood.com**

E-mail: **KnotwoodInfo@OmniMax.com**

Fencing | Privacy Screens | Gates | Decking | Cladding | Battens | Soffits & Fascias