

# AESTHETICS

The perfect solutions for any design.

Dryvit Outsulation systems offer unlimited design flexibility to suit any architectural style, and are available with a wide range of finishes that can be customized to meet virtually any color or texture desired.

The ability to easily create a vast array of architectural designs using decorative shapes and reveals is one of the hallmarks of an Outsulation system.

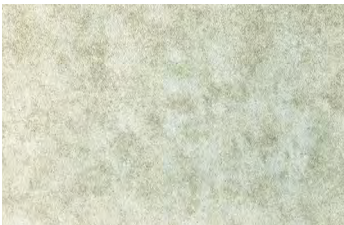
## VENEERS



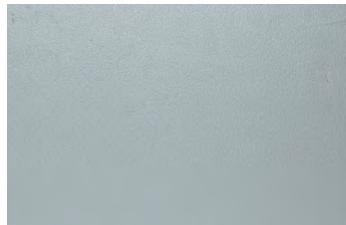
Seamless Stone



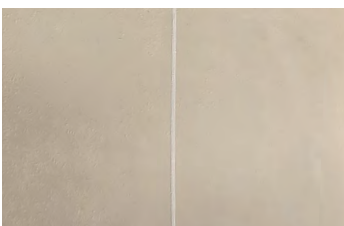
Traditional Plaster Renders



Old World or "Aged" Plaster



Metal Panel Effects



Limestone



Brick



Bellagio  
*Las Vegas, NV*



The Stratford  
*Cincinnati, OH*

# FINISHES

## Brick Veneer

Like the traditional look and feel of brick? No problem. Dryvit provides the look and feel of brick combined with all the benefits of continuous insulation that results in a highly energy efficient brick wall.

Dryvit provides the latest in brick wall technology that includes a water management system and a high R-value through the use of CI that meets the latest building code. All backed by a single source warranty that covers the entire assembly from the air/water-resistive barrier to final brick veneer.

### Options:

- NewBrick® is a lightweight insulated brick that matches the size, appearance and texture of claybricks while reducing the overall wall cost and accelerating the dry-in process
- Custom Brick is a templated acrylic finish that creates a realistic brick masonry finish



Office Building  
Schenectady, NY

## AVAILABLE IN UNLIMITED COLORS, TEXTURES AND PATTERNS

Some examples include but are not limited to:



Corinth



Georgetown



Littleton



Rockland



Used Wall Brick



Brooklyn Brick



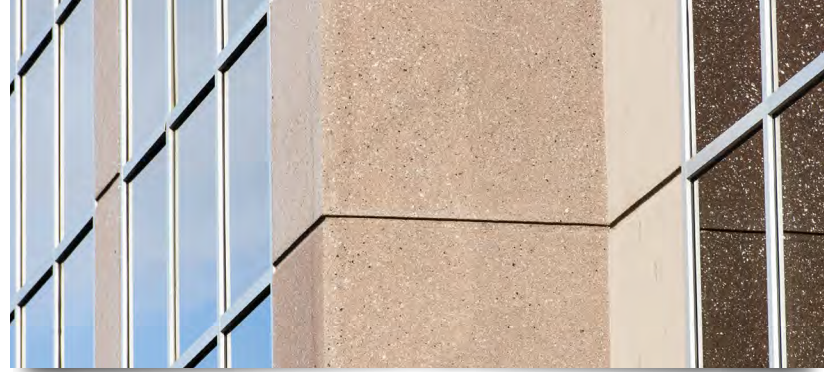
Utility Brick

# FINISHES

TerraNeo®

Like clay brick, granite is heavy and energy-intensive to find, produce and transport, and it can take months to get materials from the quarry to the jobsite.

Made from a blend of quartz, minerals, and mica, TerraNeo finish offers a 21st century alternative to granite that is environmentally sustainable, readily available, easy to apply and, best of all, looks fantastic!



Office Building  
Salt Lake City, UT

T E R R A N E O ®

## AVAILABLE IN 10 STANDARD COLORS

Custom matches to an existing building or granite sample can be developed.



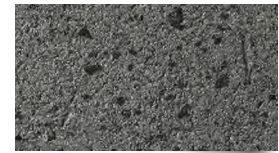
Everest



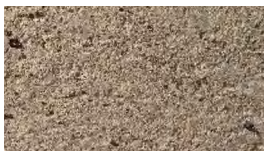
Glacier



Andes



Amazon



Serengeti



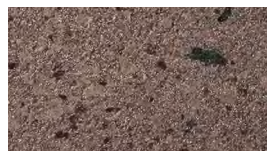
Vesuvius



Sonora



Teton



Zanzibar



Gibraltar

Mica Colors: Available in silver/white, gold and black.

# FINISHES

Reflectit™

Reflectit finish offers a rich, pearlescent look that can be used to coat other textured Dryvit finishes, or to achieve a smooth, metal panel look. With Reflectit, you can make your next project literally shine!

***Reflectit™***



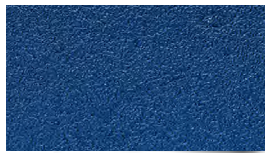
Hyatt Place  
St. Louis, MO

## AVAILABLE IN 12 STANDARD COLORS

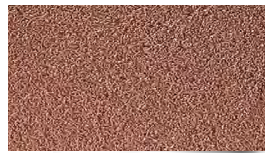
Custom colors are available upon request.



250  
Teal Magnolia



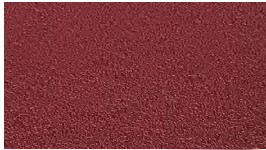
251  
Starry Night



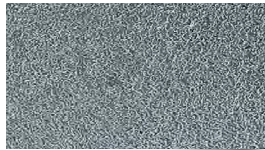
252  
Hammered Copper



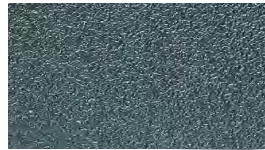
253  
Cleopatra



254  
Sierra Rose



255  
Tin Man



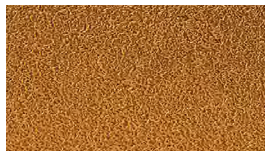
256  
Mediterranean



257  
Champagne



258  
Barney



259  
Maize



260  
Caribbean



261  
Chili Pepper

# FINISHES

## Textured Finishes

Dryvit also offers numerous finish textures more commonly associated with the look of stucco, concrete and limestone. Made from a blend of 100 percent acrylic polymers, high-performance pigments, natural aggregates and utilizing DPR (Dirt Pickup Resistant) chemistry, they are beautiful, durable, and can be stained after drying to provide a dazzling old-world or antique look.



Retail Center  
*Sioux Falls, SD*

## AVAILABLE IN A WIDE VARIETY OF STANDARD TEXTURES



Sandpebble™



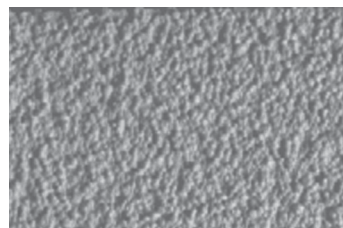
Sandpebble Fine™



Quarzputz®



Freestyle®



Sandblast®

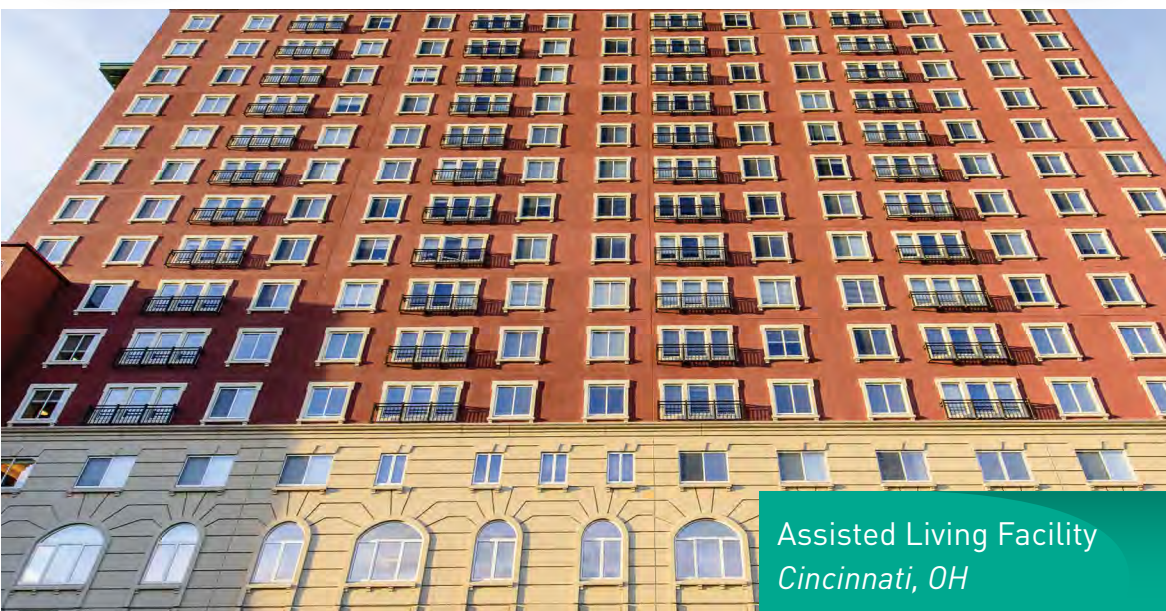


# PERFORMANCE ENHANCEMENTS

---

## HIGH STYLE MEETS HIGH PERFORMANCE

All Dryvit finishes are formulated with superior quality raw materials and have been thoroughly tested to perform in a wide range of expected conditions, but options exist to further enhance performance in particularly harsh or challenging environments.



## THESE INCLUDE:

**Fade resistance:** High-performance pigments are used to formulate vivid colors that would otherwise be prone to rapid UV breakdown. This state-of-the-art technology is also VOC and APEO free. Refer to DS269.

**Elasticity:** Special elastomeric and proprietary “V Rock” technology is used to provide increased flexibility, which performs exceptionally well when used in finishes applied directly to stucco or other rigid surfaces. Refer to DS249.

**Hydrophobicity:** Advanced water-repellent technology minimizes dirt accumulation and helps keep the wall looking like new. Refer to DS267.

**Mildew resistance:** Dryvit’s “PMR” technology utilizes advanced biocides for use in damp or shady environments where algae or mildew growth is likely. Refer to DS223.





# PERFORMANCE ENHANCEMENTS

---

## MULTIPLE BENEFITS OF USING OUTSULATION SYSTEMS

Using Outsulation Systems can reduce material use, shorten construction time, and lower building operating costs, and architects, contractors and building owners enjoy these measurable benefits every day. Fred Quinn of Quinn & Associates is one such architect. He chose the Outsulation Plus MD system for the Metro Career Academy in Oklahoma City, and exceeded the expectations of the project stakeholders by using the energy efficient, design-flexible, single-source cladding.

Brick is so common in Oklahoma City that a section of the city is actually nicknamed “Bricktown,” so it was logical that the original design of the Metro Career Academy building specified 24,000 square feet of clay brick and 13,000 square feet of cast stone. Knowing the high price for both these materials and their installation, Quinn was open to considering a more cost-effective and sustainable solution, as long as his aesthetic intent could be maintained. Dryvit’s Outsulation Plus MD System with Custom Brick™ and Limestone™ finish fully met both objectives.



*Find out more and watch a video case study*

**Architect:**  
Quinn & Associates  
Oklahoma City, OK

**General Contractor:**  
CMS Willowbrook  
Oklahoma City, OK

**Dryvit Applicator:**  
DMG Masonry  
Arlington, TX





# PROJECT HIGHLIGHTS

## MATERIAL SAVINGS

Otsulation Plus MD (using 4 inches of EPS) allowed the construction team to achieve the performance R-values required of the exterior wall, and eliminate the use of cavity insulation entirely. Substituting the 1.5-pound per square foot Otsulation Plus MD system for the 40-plus pounds per square foot masonry reduced the amount of concrete and structural steel needed to support the weight of the wall, and overall, 1.4 million pounds of materials — 96 percent of the original cladding weight — were eliminated from use!

## LABOR SAVINGS

All components of the Otsulation Plus MD System were installed by a single trained subcontractor, simplifying the construction schedule.

## CONSTRUCTION TIME SAVINGS

Using less structural material and a single contractor for the Otsulation Plus MD system reduced overall construction time by 15 weeks, which saved money and enabled the owner to move into his building ahead of schedule.

## SINGLE WARRANTY

Otsulation systems are engineered, tested and fully-warranted by Dryvit, whereas a brick wall is composed of a variety of materials supplied by different manufacturers.

## LEED CERTIFICATION

The Otsulation Plus MD system contributed to earning maximum EA category credits and LEED Gold certification.

## ENERGY SAVINGS

Measured against the modeled performance of an identical structure built to meet local building and energy codes, this building was predicted to have an energy savings of 34.8 percent and an energy cost reduction of 42.8 percent annually. After one full year, the actual energy cost reduction was 52.6 percent — more than the modeled expectation!

By choosing Dryvit's Otsulation Plus MD system, the design and construction team were able to meet the owner's aesthetic and performance goals ahead of time, and under budget. With numerous challenges to overcome and ambitious goals to meet, Otsulation by Dryvit delivered measurable results above and beyond expectation, and will continue to do so for the lifetime of the building.



## Building Energy Codes Are Changing

The international movement to improve energy performance and lower environmental impact is dramatically affecting the way buildings must be designed and built, particularly with the requirements for air barriers and continuous insulation. Outsulation by Dryvit is a tested and proven solution to this challenge.

Best of all, with Outsulation systems, performance and aesthetics aren't mutually exclusive. The wide variety of finishes, textures and colors can make nearly any architectural vision a reality.

The benefits of Outsulation have been realized in hundreds of thousands of projects around the world, and the systems provide a single-source, seamless and sustainable cladding solution for buildings of any shape, size and type.

Simply put, Outsulation systems provide everything you need from a building code perspective, and everything you want from a performance and aesthetic standpoint.

Visit [dryvit.com](http://dryvit.com) or call 800-556-7752 to learn more about Outsulation by Dryvit.

Tremco Construction Products Group brings together the Commercial Sealants & Waterproofing and Roofing & Building Maintenance divisions of Tremco CPG Inc.; Nudura Inc.; Prebuck LLC; Willseal; Weatherproofing Technologies, Inc.; Weatherproofing Technologies Canada, Inc.; Pure Air Control Services, Inc.; and Tremco Barrier Solutions, Inc.



Outsulation®, Backstop NTX®, Aquaflash®, Panzer®, NewBrick®, Quartzputz®, Freestyle®, and Sandblast® are registered trademarks of Dryvit Systems, Inc. Dymonic® and ExoAir® are registered trademarks of Tremco Incorporated. Securock® is a trademark of USG Corporation and its affiliates. Use of the ® symbol indicates registration with the US Patent & Trademark Office and the Canadian Intellectual Property Office.

© Dryvit Systems, Inc. 2020

DS266



**Construction Products Group**

3735 Green Rd. | Beachwood, OH 44122  
800.321.7906 | [tremcocpg.com](http://tremcocpg.com)